



TK International
020 7794 8700
www.t-k.co.uk

Residential Sales
Residential Lettings
Property Management

Sales Office:
9 Heath Street
Hampstead
London NW3 6TP
E: sales@t-k.co.uk

Lettings Office:
16-18 Heath Street
Hampstead
London NW3 6TE
E: lettings@t-k.co.uk

tk.international
TK International
TK International

Est.
1998



Heath Close Hampstead Garden Suburb NW11

Approached via a deep front landscaped garden, is this exceptionally well presented five double bedroom Grade II Listed family home (3,121sqft gross), located in this sought after private close adjacent to the Heath Extension.

The current owners have painstakingly and tastefully refurbished the house throughout comprising numerous luxury features including a custom-built kitchen and bathrooms. The ground floor accommodation comprises a guest cloakroom, main reception room, study and a large family room open to beautiful 20'x17' kitchen/breakfast room.

The first floor enjoys a 17'10 principal bedroom with dressing room & large en-suite bathroom and two further bedrooms sharing a 'Jack & Jill' bathroom. The second floor boasts two large bedrooms (one currently used as a family/games room) and large family bathroom incorporating a utility area.

This wonderful home is also enhanced by both a southerly facing rear garden and a covered first floor terrace. The extensive amenities and facilities of Golders Green (Northern Line) are located within half a mile and the Heath Extension at the end of the road.

£3,000,000

JOINT SOLE AGENT

Freehold











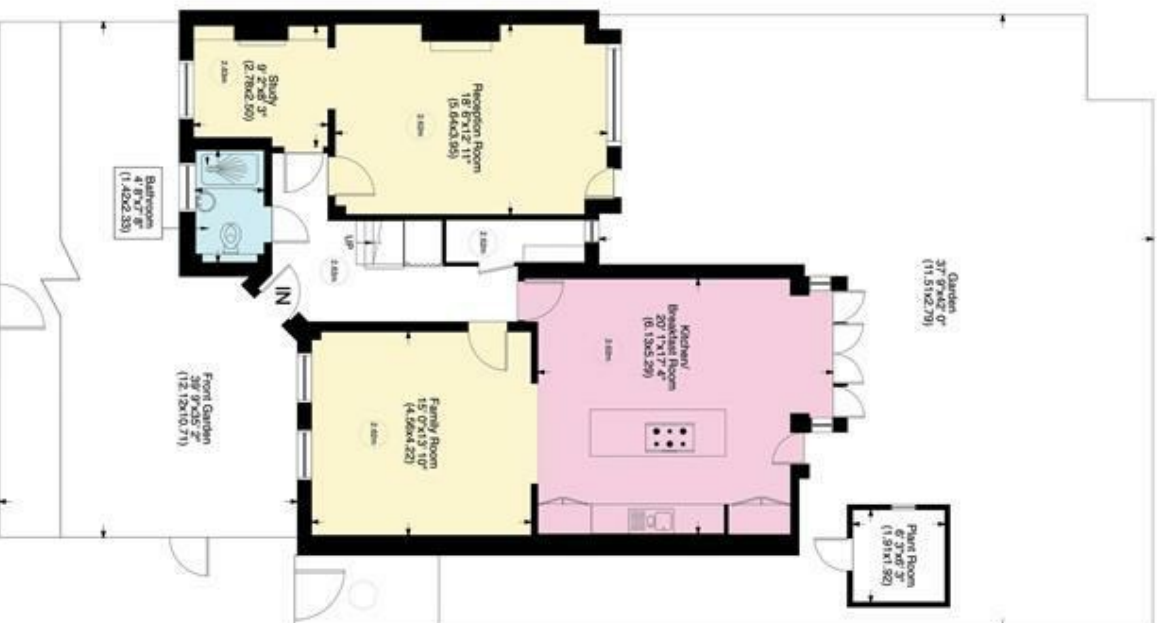


Heath Close NW11

Gross internal area (approx.)

290 Sq m (3121 Sq ft) Including Plant Room, Terrace, under eaves and under 1.5m
270 Sq m (2903 Sq ft) Excluding Plant Room, Terrace, under eaves and under 1.5m

For Identification only, Not to Scale



www.WilliamSalisbury.Photography

Not to Scale, for guidance only and must not be relied upon as a statement to fact. All measurements are approximate only (and have been prepared in accordance with the current edition of the RICS Code of Measuring Practice).

Heath Close NW11

Acre 0.088 (approx.)

For identification only, Not to Scale



www.WilliamSalisbury.Photography

Not to Scale, for guidance only and must not be relied upon as a statement to fact. All measurements areas are approximate only (and have been prepared in accordance with the current edition of the RICS Code of Measuring Practice).